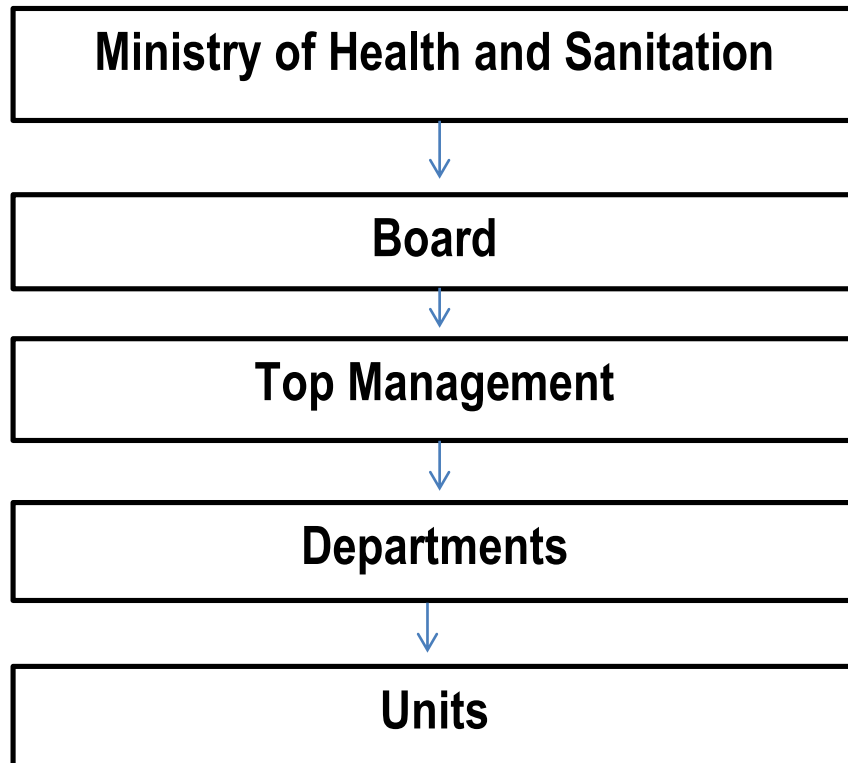




PHARMACY BOARD OF SIERRA LEONE ORGANOGRAM

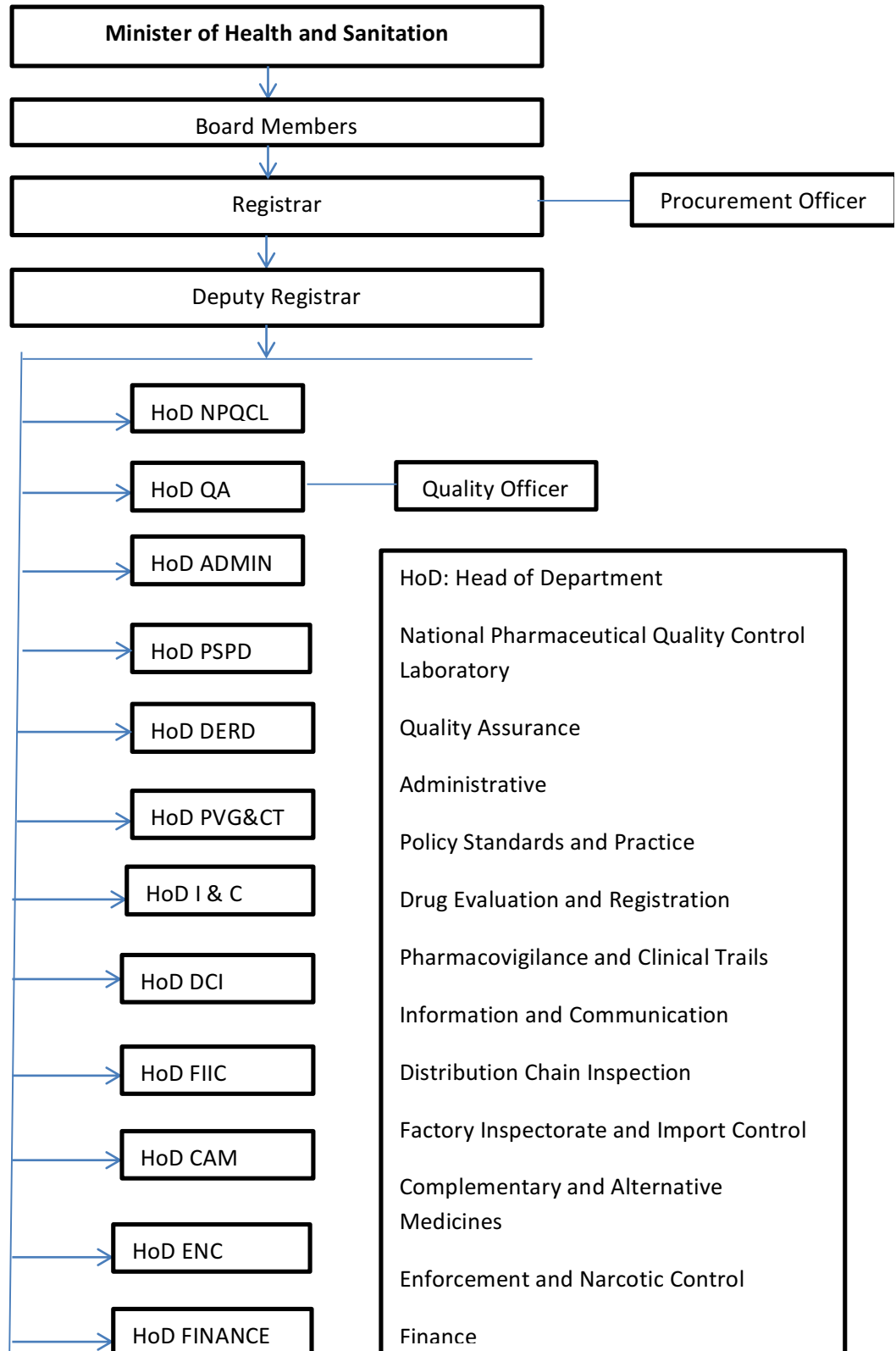


Attachment Number 1:





PHARMACY BOARD OF SIERRA LEONE ORGANOGRAM





PHARMACY BOARD OF SIERRA LEONE ORGANOGRAM



HoD NPQCL (National Pharmaceutical Quality Control Laboratory) : Units are

1. Physicochemical
2. Medical Devices
3. Microbiology

HoD QA (Quality Assurance) : Units are

1. Monitoring and Evaluation
2. Control of quality documents and archiving

HoD Admin (Administrative) : Units are

1. Human Resource
2. Stores Management

HoD PSPD (Policy Standards and Practice) : Units are

1. Application for Licensing of new Premises
2. Regulation and Research
3. Internship Training

HoD DERD (Drug Evaluation and Registration) : Units are

1. Pre – Marketing Authorization
2. Marketing Authorization
3. Post – Marketing Authorization

HoD PVG&CT (Pharmacovigilance and Clinical Trials): Units are

1. Pharmacovigilance
 - a. Public Health
2. Clinical Trials

HoD I & C (Information and Communication) : Units are

1. Communication and Outreach
2. Information and Technology



PHARMACY BOARD OF SIERRA LEONE ORGANOGRAM



HoD DCI (Distribution Chain Inspection): Units are

1. Pharmaceutical Outlet(Retail)
2. Regional Offices (Bo Kenema, Makeni and Kono)

HoD FIIC (Factory Inspectorate and Import Control) : Units are

1. Import Control
 - A . Queen Elizabeth II
 - B. Lungi Entry Port
2. Pharmaceutical Outlet (Import Wholesale)
 - A. Factory
 - B. Wholesale

HoD CAM (Complementary and Alternative Medicines) : Units are

1. Herbal Products
2. Cosmetics

HoD ENC (Enforcement and Narcotic Control) : Units are

1. Controlled Drugs
2. Enforcement

HoD Finance: Units are

1. Expenditure
2. Income